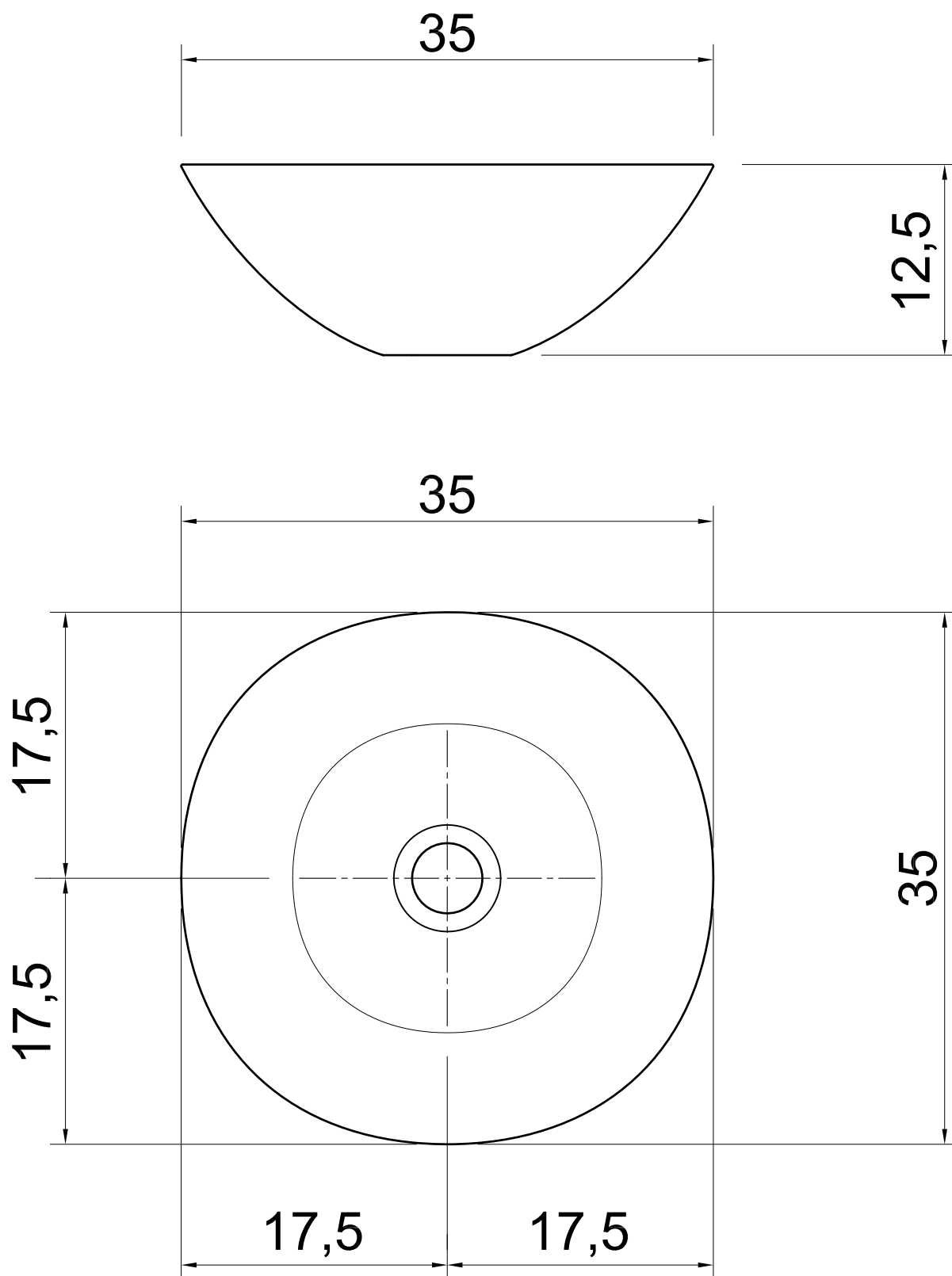
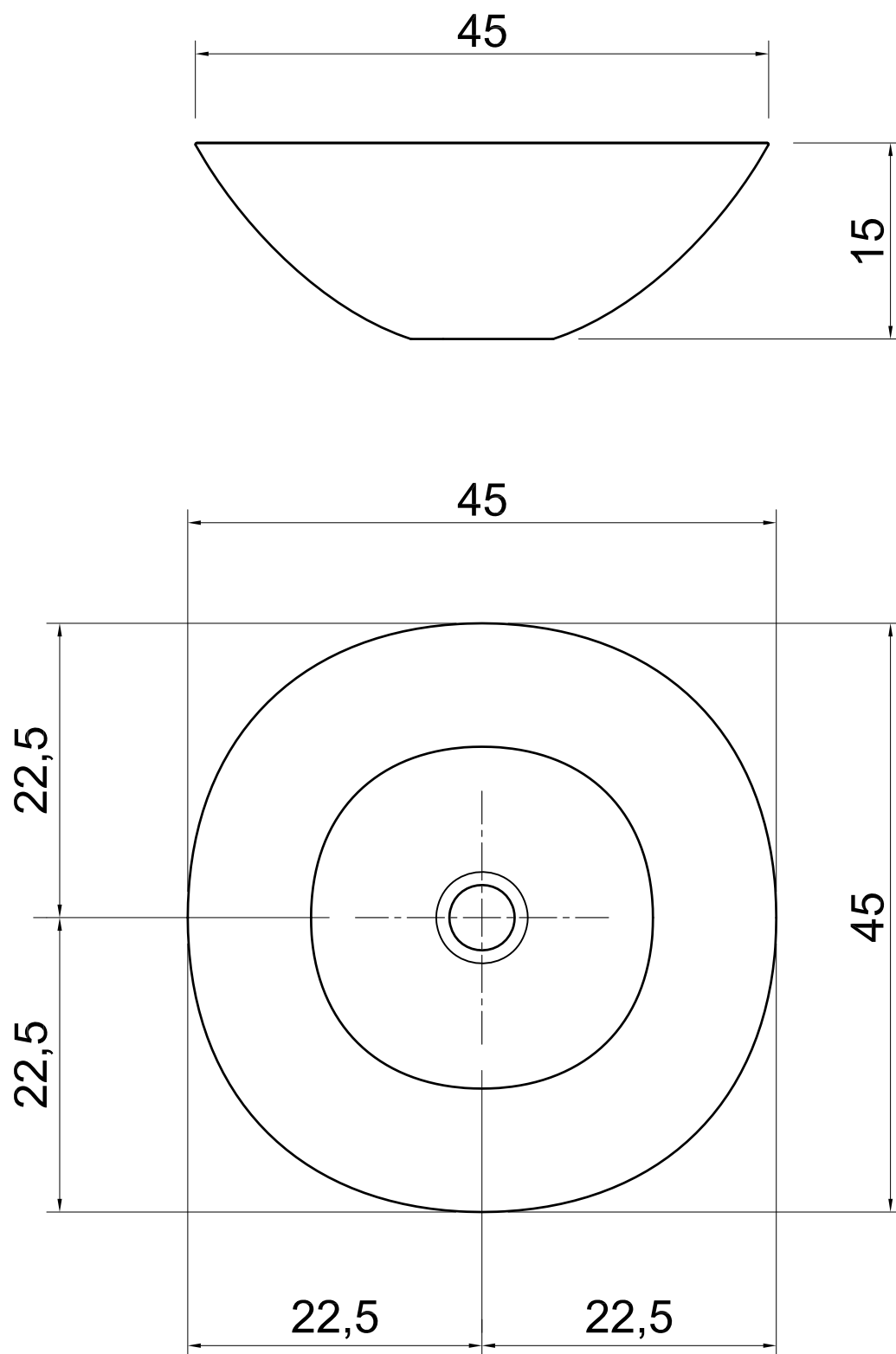


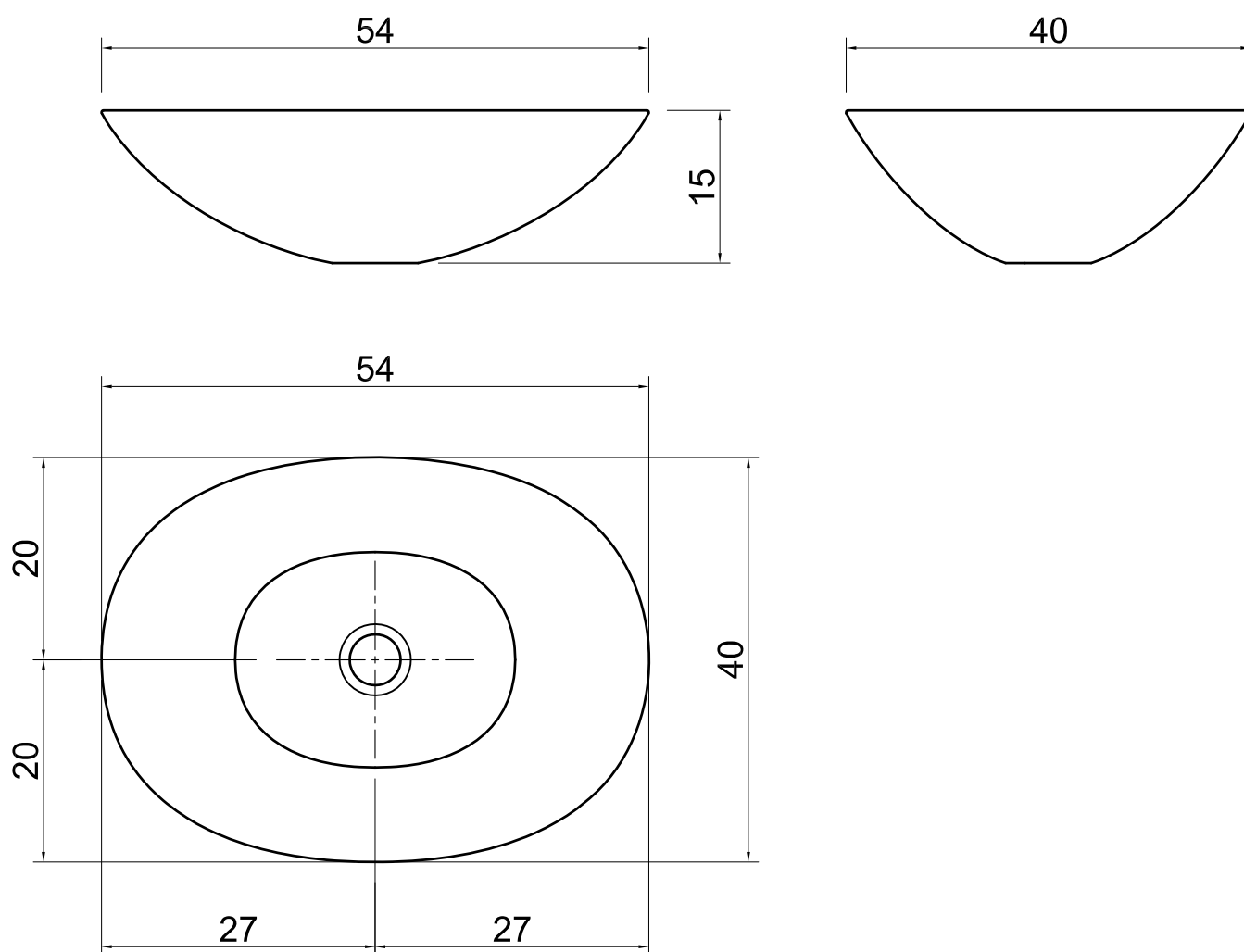
Troppo pieno / *Overflow*: NOPeso lordo / *Gross weight*: kg 5 ca.Peso netto / *Net weight*: kg 4 ca.

Troppo pieno / *Overflow*: NOPeso lordo / *Gross weight*: kg 6 ca.Peso netto / *Net weight*: kg 4 ca.

Troppo pieno / *Overflow*: NO

Peso lordo / *Gross weight*: kg 9 ca.

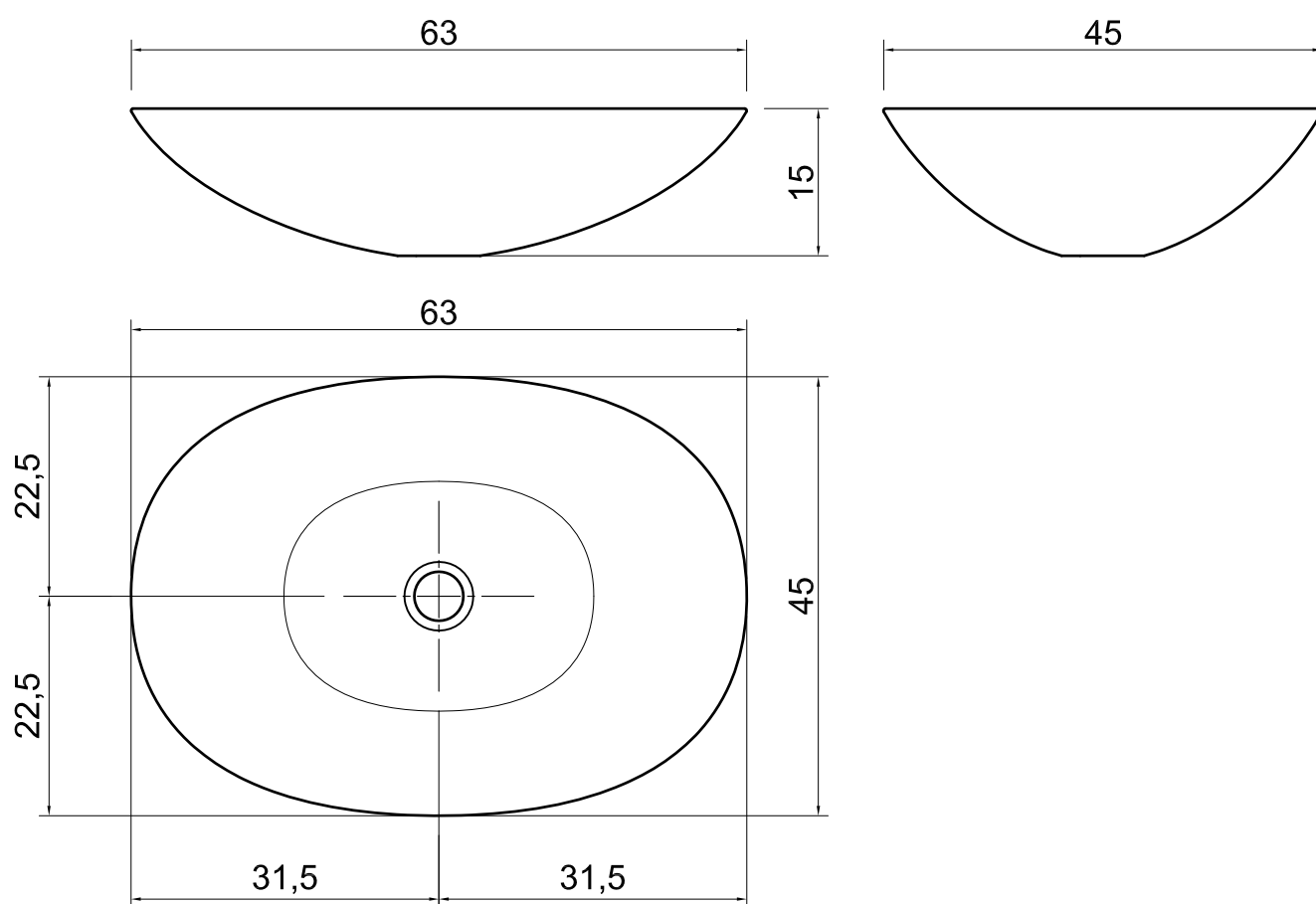
Peso netto / *Net weight*: kg 7 ca.

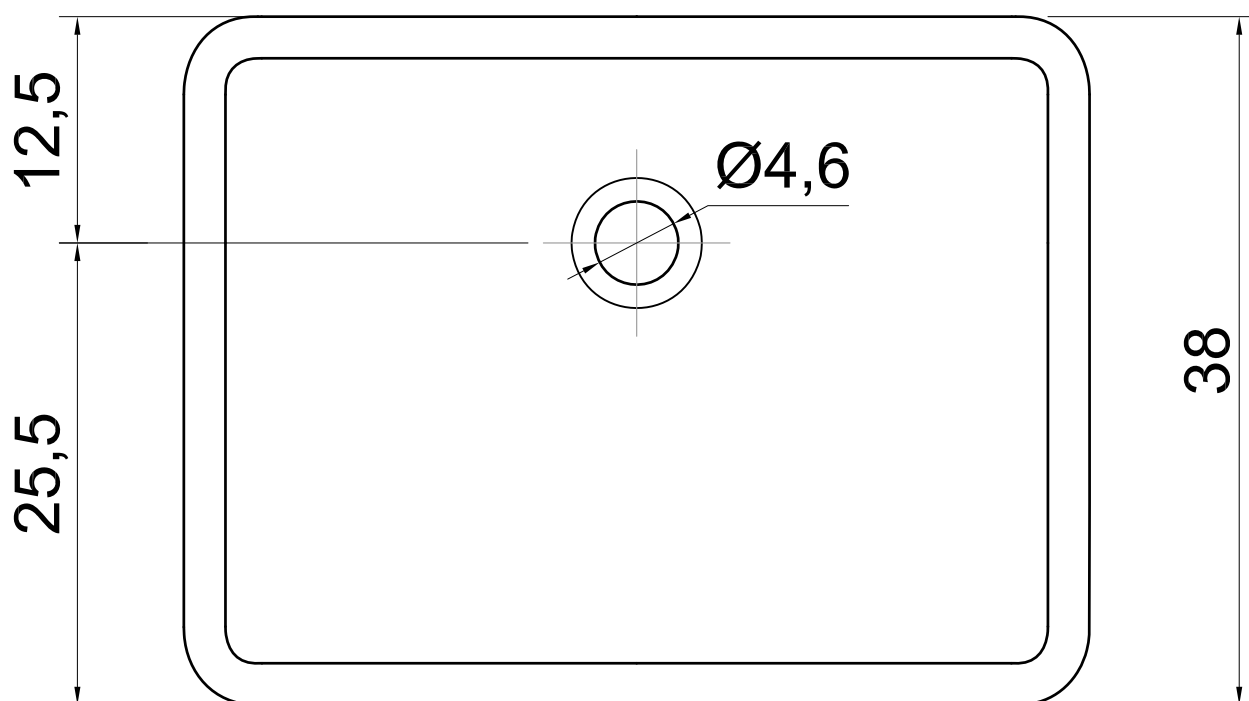
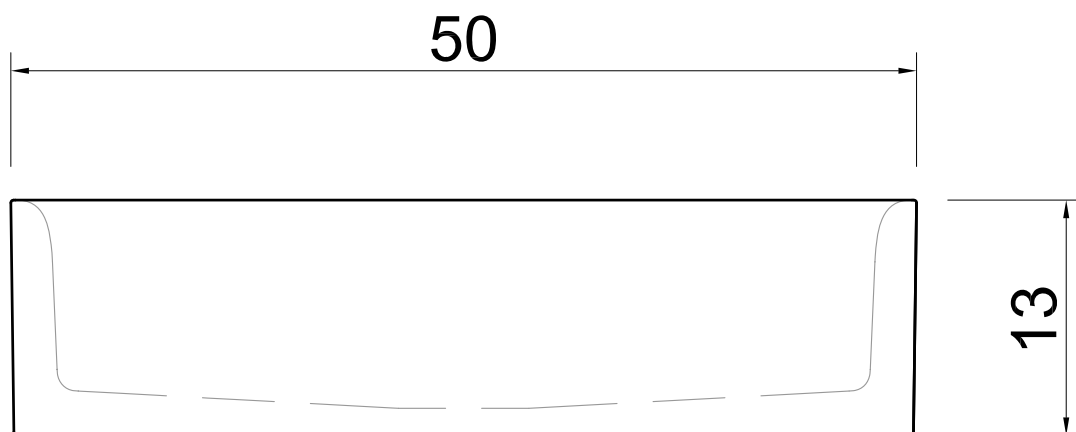


Troppo pieno / *Overflow*: NO

Peso lordo / *Gross weight*: kg 9 ca.

Peso netto / *Net weight*: kg 7 ca.

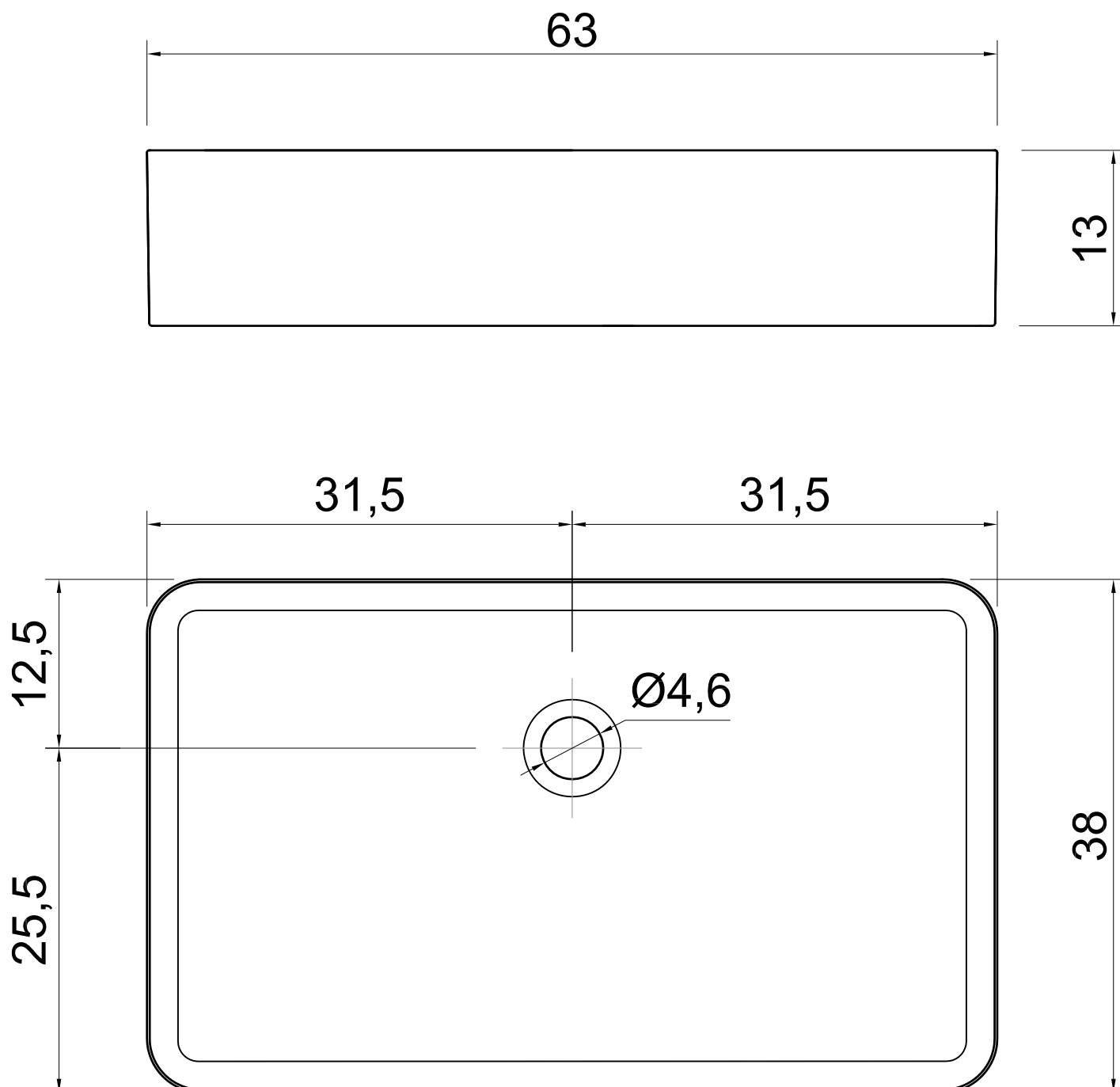


Troppo pieno / *Overflow*: NOPeso netto / *Net weight*: kg 12 ca.

Troppo pieno / *Overflow*: NO

Peso lordo / *Gross weight*: kg 15,5 ca.

Peso netto / *Net weight*: kg 14 ca.



Troppo pieno / *Overflow*: NO

Peso lordo / *Gross weight*: kg 10 ca.

Peso netto / *Net weight*: kg 8,5 ca.

